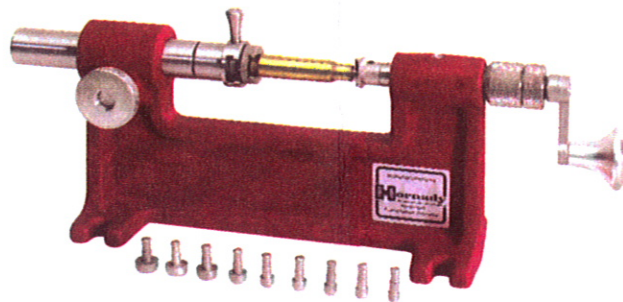


Hornady®

CAM LOCK TRIMMER



The Hornady Cam Lock Trimmer uses standard Hornady removable shell holder heads so you can use the same shell holder head in your trimmer or your Hornady Reloading Press.

The Hornady Cam Lock Trimmer can be mounted on a bench or clamped in a vise, and is adjustable for all sizes of cartridge cases. Assemble your Cam Lock Trimmer by inserting cutter spindle into trimmer frame and screwing cutter into cutter spindle.

ADJUSTMENT AND OPERATION PROCEDURE

1. To insert the correct shell holder head in the Cam Lock Trimmer, turn shell lock counterclockwise until the spindle is clear of shell holder head slot and insert correct shell holder head. Return shell lock to its original position.
2. To insert pilot, loosen set screw in cutter and insert the correct size of pilot for your case neck. Retighten the set screw.
3. To adjust the trimmer to the desired length, pull the handle out until stopped by the cutter. Loosen the spindle lock knob about 1 turn. You may need to push in on the spindle lock knob to release the spindle. Slide the spindle back to make room for the case. Turn the shell lock counterclockwise until a case will fit in the shell holder. Move the cutter to the full in position. Move the spindle inward to start the pilot in the case mouth. Lock the case in place by turning the shell lock clockwise. Move the spindle in until the case is touching the cutter with the cutter in the full in position. Rotate the spindle until the shell lock handle is in vertical or another convenient position, and tighten the spindle lock. This is an approximate setting.

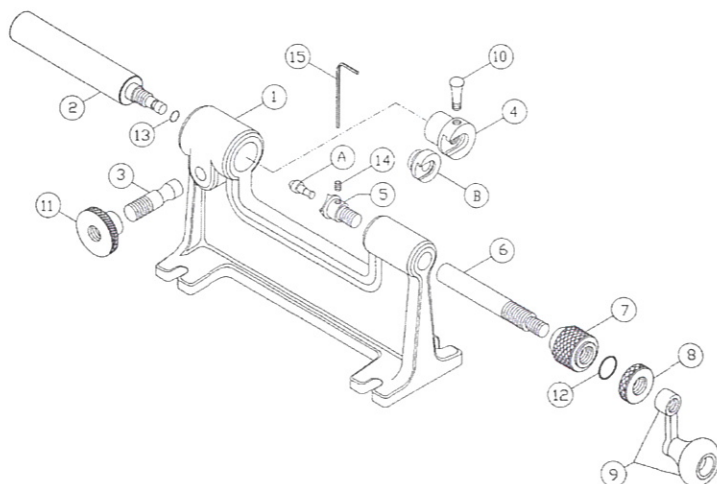
The Hornady Cam Lock Trimmer has a fine adjustment feature on the cutter spindle. The cutter spindle adjustment nut, o-ring, and lock nut may be tightened to provide enough tension on the threads as to allow changing the setting, while not allowing unintentional movement in operation. It should be locked in place by further tightening when adjustment has been achieved. To center the fine adjustment, turn the lock nut against the adjustment nut. Turn the lock nut and adjustment nut as a unit until the lock nut touches the handle. Back the lock and adjustment nut away from the handle about 3 turns. This should be about the center of the adjustment range.

4. Rotate the cutter handle with slight inward pressure. Pull back on the handle removing the pilot from the case mouth. Loosen the shell lock remove the case and measure. Make length adjustments by turning the adjustment nut relative to the cutter spindle. One full turn of the adjustment nut will make a .050 change in the trim length. Reinsert the case and trim again. When desired length has been achieved make sure spindle lock and cutter adjustment nut are tight and proceed to trim cases as follows: Insert case in shell holder, start pilot in case mouth, lock case in place with shell lock, and rotate handle with slight inward pressure.

NOTE: ALWAYS START PILOT IN MOUTH OF CASE BEFORE LOCKING CASE IN SHELL HOLDER.

5. Cases should be chamfered and deburred with Hornady Chamfering and Deburring Tool.

Over for shellholder/trimmer pilot guide.



Key No.	Part No.	Description
	A	Pilot (SEVEN INCLUDED)
	b	Shell Holder (NOT INCLUDED)
1	398210	Frame
2	398211	Spindle
3	398212	Spindle Lock
4	398213	Shell Lock
5	398214	Cutter
6	398215	Cutter Spindle
7	398216	Adjustment Nut
8	398217	Lock Nut
9	398218	Handle Assembly
10	398219	Shell Lock Handle
11	398246	Spindle Lock Knob
12	480083	O-Ring 3/32x1/2x11/16
13	392772	O-Ring 1/16x3/16x5/16
14	390724	Pilot Set Screw
15	380045	Allen Wrench

SHELL HOLDER/TRIMMER PILOT GUIDE

Hornady manufactures a complete line of shell holders and trimmer pilots to fit the Hornady Cam Lock Trimmer. The removable shell holder heads are interchangeable with all Hornady Reloaders and most other popular cartridge reloading tools. They are manufactured to exact specifications and are precision cut from finest steel, then hardened. Hornady shell holder heads are unconditionally guaranteed. Hornady Trimmer Pilots are interchangeable in the Hornady Cam Lock Trimmer and different pilots must be used with different caliber cartridges. The caliber list below is a convenient guide to help you determine which shell holder head and pilot you will need for the different calibers available. If this guide is lost, the same chart can be found in the current Hornady Catalog.

2-Die Sets (Rifle)

CARTRIDGE	SHELL HOLDER	TRIMMER PILOT	CARTRIDGE	SHELL HOLDER	TRIMMER PILOT
17REM (.172)	16	Order Pilot & Cutter	30 Herrett (.308)	2	9
17/222 (.172)	16	as one Unit	303 Sav (.308)	33	9
17/223 (.172)	16	" "	308 Win (.308)	1	9
218 Bee (.224)	7	1	30/40 Krag (.308)	11	9
219 Zipper (.224)	2	1	30/06 (.308)	1	9
221 Rem (.224)	16	1	300 H&H (.308)	5	9
222 Rem (.224)	16	1	300 Win Mag (.308)	5	9
22 Hornet (.224)	3	1	300 Why (.308)	5	9
22 K-Hornet (.224)	3	1	300 Rem Ultra Mag	5	9
22 RCFM-Jet (.224)	6	1	338 Rem Ultra Mag	5	13
22 PPC (.224)	6	1	308 Norma Mag (.308)	5	9
5.6x50 Mag (.224)	16	1	7.62 Russ (.308)	23	9
5.6x52R (.227)	2	1	7.5 Swiss (.308)	30	9
5.6x57 (.224)	1	1	32/20 Win (.308)	7	9
223 Rem (.224)	16	1	7.62x39 (.308)	6	9
22/250 (.224)	1	1	7.7 Jap (.312)	1	10
220 Swift (.224)	4	1	303 Brit (.312)	11	10
22 Sav. HP (.227)	2	1	7.65 Beig (.312)	24	10
224 Why (.224)	17	1	32 Win Spl (.321)	2	11
225 Win (.224)	4	1	32/40 (.321)	2	11
240 Why (.243)	1	3	8MM Mau (.323)	1	11
243 Win (.243)	1	3	8MM/06 (.323)	1	11
243 Win (.243)	1	3	8MM Rem Mag (.323)	5	11
244/6MM (.243)	1	3	8.60S (.323)	1	11
6MM Int. (.243)	1	3	8x68S (.323)	30	11
6MM/223 (.243)	16	3	8.15x46R (.337)	2	11
6MM/PPC (.243)	6	3	338 Win Mag (.338)	5	13
6MM TCU (.243)	16	3	33 Win (.338)	14	13
6MM/284 (.243)	1	3	338/378 Why	14	13
6x47 Rem (.243)	16	3	340 Why (.338)	5	13
250 Sav. (.257)	1	3	348 Win (.338)	25	14
25/06 (.257)	1	4	35 Rem (.358)	26	15
257 Rbts (.257)	1	4	35 Whelan (.358)	1	15
25/20 Win (.257)	7	4	357/44 B&D (.358)	30	15
25/35 Win. (.257)	2	4	350 Rem Mag (.358)	5	15
256 Win (.257)	6	4	357 Herrett (.357)	2	15
257 Why (.257)	5	4	358 Win (.358)	1	15
25 Rem (.257)	12	4	358 N Mag (.358)	5	15
25/284 (.257)	1	4	375 H&H (.375)	5	16
6.5x55 (.264)	19	5	376 Steyr (.375)	15	16
6.5/06 (.264)	1	5	378 Why (.375)	14	16
6.5MM TCU (.264)	16	5			
6.5 Rem Mag (.264)	5	5	9.3x74R (.366)	13	15
6.5 Mann (.264)	20	5	9.3x57 (.366)	1	15
6.5 Carc (.264)	21	5	9.3x62 (.366)	1	15
6.5 Jap (.264)	34	5	10.3x60 (.415)	25	17
6.5x57 (.264)	1	5	416 Rem Mag (.416)	5	17
6.5x68 (.264)	30	5	416 Rigby (.416)	38	17
264 Win Mag (.264)	5	5	416 Why Mag (.416)	14	17
270 Win (.270)	1	6	450 Marlin (.458)	5	19
270 Why (.277)	5	6	460 Why (.458)	14	19
7x30 Waters (.284)	2	7			
7x57 (7MM Mau.) (.284)	1	7	3-Die Set		
7MM/08 (.284)	1	7	25 ACP (.251)	37	4
7MM Rem Mag (.284)	5	7	30 M1 Carb (.308)	22	9
7MM Rem BR 9.284)	1	7	32 ACP (.311)	22	10
7MM TCU (.284)	16	7	32 S&W Long/Short,H&R Mag (.312)	36	10
7MM Merrill (.284)	4	7	9MM Luger/9x21 Mak (.55)	8	15
7x65R (.284)	13	7	380 Auto (.355)	16	15
7MM Why (.284)	5	7	38 Super Auto (.357)	8	15
7x64 (.284)	1	7	38 S&W (.357)	28	15
7mm/223 Ingram (.284)	16	7	38-357-357 Max (.357)	6	15
7x47 Helm (.284)	16	7	375 Win (.375)	2	16
7x61 S&H (.284)	35	7	10MM Auto/40 S&W (.400)	10	21
7MM Exp/280 (0284)	1	7	38/40 Win (.400)	9	21
284 Win (.284)	1	7	41 AE (.410)	8	17
7.35 Carc. (.300)	21	8	41 Mag (.410)	29	17
30/30 Win (.308)	2	9	44 Spl/44 Mag (.430)	30	18
300 Sav (.308)	1	9	44 Auto Mag (.430)	1	18
30 Luger (.308)	8	9	44/40 Win (.429)	9	18
30 Merrill (.308)	4	9	444 Marlin (.430)	27	18
30/378 Why (.308)	14	9	45 Rim Auto (.451)	31	19
			45 ACP/AR/WM (.451)	1	19
			45 Long Colt (.451)	32	19
			454 Casull	32	19
			45/70 Gov't (.458)	14	19
			458 Win Mag (.458)	5	19
			75 Linebaugh	32	NA
			50 AE	40	

Hornady Manufacturing
P O Box 1848
Grand Island NE 68802
www.hornady.com